

**Puv`cyi tŠimfvi
gnvcwiKíbv**

Master Plan of Chandpur Paurashava

gnvcwiKíbv cÖYq†b AbymwiZ cxwZ

gnvcwiKíbv n†jv †Kvb wbw` ©ó GjvKvi wbw` ©ó †gqv†`i †fŠZ I Av_©-mvgvwRK Dbœq†bi mvgwMÖK ifcKí| mvaviYZ: `xN© †gqv†` bMi Dbœq†bi j¶" I wb†`©kK wba©viY, j¶" Abyhvqx Dbœqb †KŠkj I bxwZgvjv wbifcY, f~wg e"envi I e"e"vcbv, eb"vcÖevn I cvwb wb®<vkb, cwifek msi¶Y, gvbmxšZ bvMwiK myweavw` wbwðZKiYmn wbw`©ó LvZlqvwi Dbœqb cÖ`—vebv, Dbœqb wbqš¿Y cxwZ Ges `xN©,

<p>gnvcwiKíbv cxwZmg~†ni</p>	<p>†gqv†`i mvgwMÖK ifcKí </p>	<p>gnvcwiKíbv mvgwMÖK ifcKí </p>	<p>ev`levq†b wbqš¿Y</p>
<p>gnvcwiKíbv c~vb</p>	<p>cÖÖYq†bi †¶†¶ cÖ</p>	<p>20jZqvZbw</p>	<p>†švgjAbymZ Kivm††††† fwel"r Dbœqb Ges Dbœqb wbqš¿†Yi Rb" mvgwMÖKfv†e †KŠkjMZ bxwZ wba©viY Kiv </p>
<p>Avievb Gwiqv c~vb</p>	<p>eZ©gvb bMivwqZ GjvKv Ges Av†kcv†ki m‡çve" bMivqb cÖwµqvaxb GjvKv mg~n</p>	<p>10 eQi</p>	<p>bMi Dbœq†bi Kvh©µg th GjvKvq m‡úvw`Z n†e †mB me GjvKv mg~†ni Dbœqb wbqš¿Y, f~wg e"envi Ges AeKvVv†gvMZ Dbœqb Z_v hveZxq Dbœqb cÖ`Zve</p>

gnvcwiKíbv cÖYq†bi j¶" I D†ik"

- ❑ tcŠimfvi mKj bvMwiK†`i†K kn†ii †hvMv†hvM e"e"v, M,,nvqY, moK AeKvVv†gv, evwYR", cqte"e"vcbv, cvwb mieivn, cvwb wb®<vkb, AveR©bv e"e"vcbv, wk¶v, ^v"†mev, wPĚwe†bv`b I Ab"vb" AeKvVv†gv mǻúwK©Z hy†Mvc†hvMx †mevmg~n cÖ`v†bi j¶" 20 eQi tgqv`x GKwU Dbœqb ifcKí cÖYqb|
- ❑ tcŠi GjvKvi fwel"r Dbœqb cwiKíbv Ges `xN©, ga" I ^í tgqv`x Dbœqb Kg©m~wPi Dci GKwU ^"Q aviYv cÖ`vb hv †cŠimfvi fwel"r Dbœqb MwZaviv†K GKB m†½ Zivwš^Z I k,,•Ljvq ivL†Z mnvqK n†e|
- ❑ bvMwiK†`i Rxebhvîvi gv†bvboeq†bi j¶" mǻ †vebvmg~n†K Kv†R jvMv†Z I we`"gvb mgm"vmg~n wPwýZ K†i †m,wj `~ixKi†Y bvMwiK AskMÖn†bi gva"†g cÖK...Z Pvwn`vi wfwĚ†Z Dbœqb wewb†qvM cwiKíbv cÖYqb| AMÖvwaKvi LvZ,†jvi g†a" _vK†e 3 f~wg e"envi cwiKíbv, cvwb wb®<kb I cwi†ek

Puv`cyi tšimfv mꞑúwK©Z

msw¶ß Z_`vw`

~'vwcZ : 1-08-1896

AvqZb : 23.25 eM©

wK.wg. (†M‡RU Abymv‡i)

tjvKmsL`v (2011): 159021

Rb; (m~Î:Population Census, 2011)

tšimfvi ‡kªYx : ôKÕ



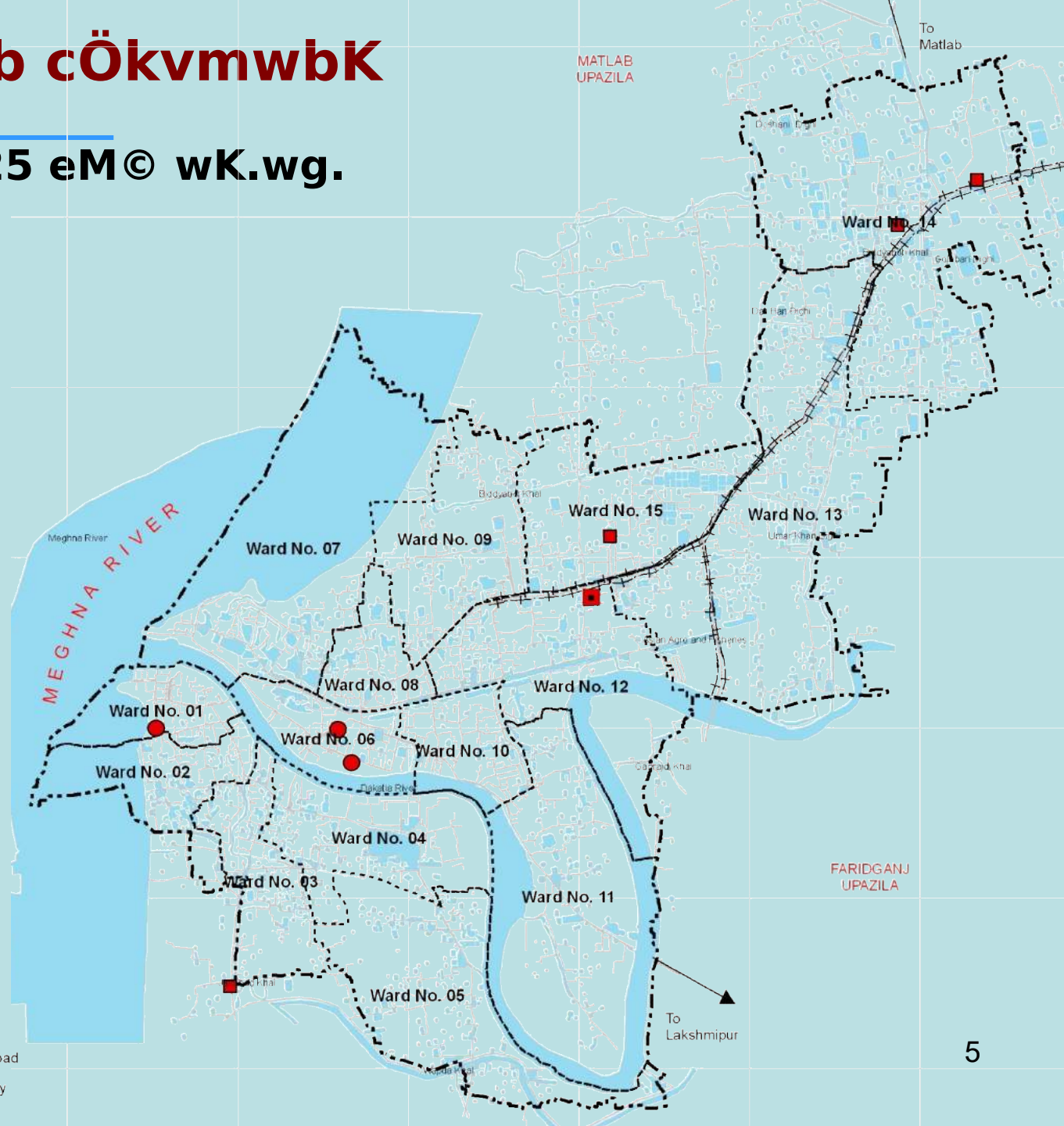
তঁশঁমঁফঁবঁ eZ©gvb cÖkvmwbK

mxgvby

তঁশঁমঁফঁবঁ AvqZb 23.25 eM© wK.wg.

(Rwic Abymvিi)

তঁশঁমঁফঁবঁ lqvW© 15



Legend

- Administrative Boundary
- Pourashava Boundary
- Ward Boundary
- Structure Plan Boundary

- Administrative Location
- Upazila Headquarter
- Pourashava Office

- Existing Road
- Water Body

Rixc cÖwZcv`"mg~n

Rixc mꝛúwK©Z welqmg~n

**cÖv_wgK ch©v†q kn†ii eZ©gvb Ae¯'v,
mgm"v I mꝛçvebv mꝛú†K© aviYv jv†fi
D†ï†k" Qqwu c,, K Rixc mꝛúbœ Kiv nq,**

▪ **Av ©-mvgvwRK Rixc
h_vμ†g:**

▪ **f~wg eÜziZv Rixc**

▪ **†fŠZ AeKvVv†gv Rixc**

▪ **cwienb I cwihvb e"e¯'vcbv Rixc**

▪ **cvwb wb® <kb I cwi†ek e"e¯'vcbv
Rixc**

▪ **f~wg e"envi Rixc**

gnvcwiíbv GjvKvi mxgvbv wba©viY cxwZ

†M‡RU msMÖn

†gŠRv bKkv msMÖn

cÖv wgK cwiKíbv GjvKv wba©viY

†cŠimfvi ^vfvweK Dbœq‡bi MwZaviv hvPvB

f~ eÜziZv I eb"v cÖeYZv hvPvB

†cŠimfvi Dbœq‡bi mv‡_ mswkó miKvwi I
†emik... KZ...©c‡¶I fwel"r Kg©KvÛ hvPvB

cŠi KZ...©c‡¶i mv‡_ Av‡jvPbv.
gZwewbgq Ges g%oZK"

**gnvcwiíbv GjvKvi
mxgvbv wba©viY**

Rixčci Rb" teR g"vc cÖ- 'ZKiY

tgŠRv g"vc msM^an

tgŠRv g"vc " <"vwbs

tgŠRv g"vc wWwRUvBRKiY

GwWU cøU †PwKs

wWwRUvBRW †gŠRv g"v†c
wR.wm.wc wPwýZKiY

tgŠRv wRI†idv†iwÝs

wR.wm.wc Rwic

†gvRvBK †gŠRv g"vc

gvV ch©v†q †gvRvBK
g"v†ci wbix¶Y

†gvRvBK †gŠRv g"vc/ cÖKí
GjvKv g"v†ci †jAvDU ^ZixKiY

wR. AvB. Gm
Z_ "fvÛvi

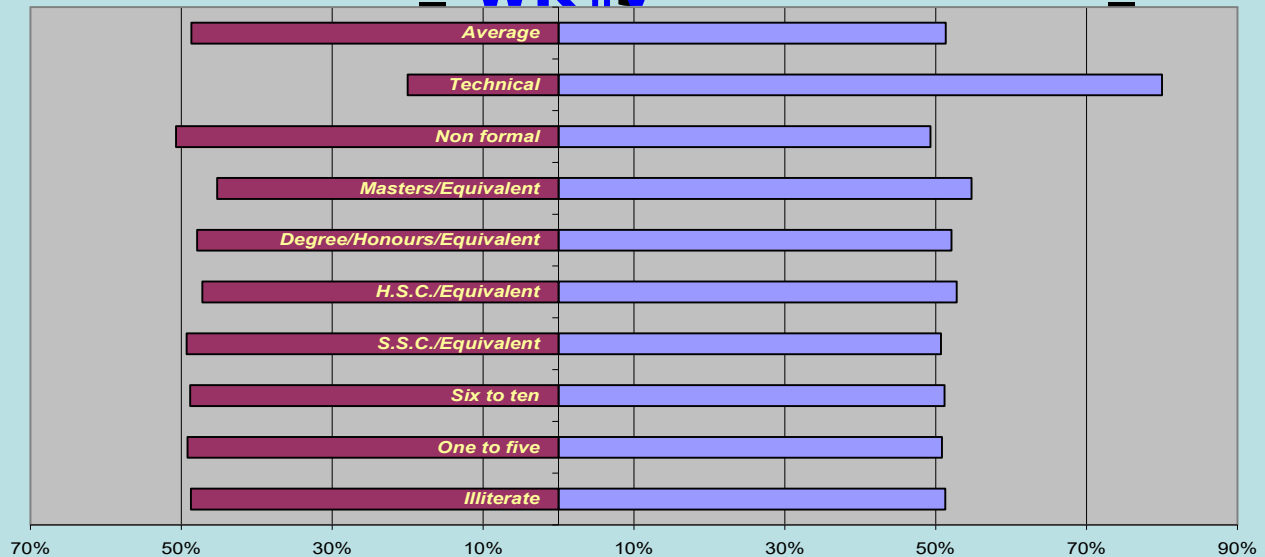
Rixçc msM,,nxZ Z_''

Av_©-mvgvwRK Ae`'v

RbmsL`v (2011)

Iqv W© bs	AvqZ b	Rbm sL`v (2011)	%
1	143.3	8476	9.3
2	200.2	9571	10.5
3	192.7	8716	9.5
4	291.6	6147	6.7
5	425	6753	7.4
6	175.4	7134	7.8
7	662.2	12995	14.2
8	121.1	11286	12.3
9	311.3	14923	16.3
10	148.3	13468	14.7
11	622.7	9788	10.7
12	432.4	14177	15.5
13	855	14856	16.3
14	837.7	11186	12.2
15	326.2	9545	10.4
†gv U	5745.1	101390	100.0

Puv`cyi tcŠimfvi Av_©-mvgvwRK Ae`'v Rvbvi Rb` †gvU Lvbvi 5% -i-wfwEK ^`ePqb bgybv msMÖn cxwZ†Z mgx†v Pvjv†bv nq| Av_©-wk†v Rixc ††K



	Illiterate	One to five	Six to ten	S.S.C./Equivalent	H.S.C./Equivalent	Degree/Honours/Equivalent	Masters/Equivalent	Non formal	Technical	Average
Female	48.7%	49.2%	48.8%	49.3%	47.2%	47.9%	45.2%	50.7%	20.0%	48.7%
Male	51.3%	50.8%	51.2%	50.7%	52.8%	52.1%	54.8%	49.3%	80.0%	51.3%

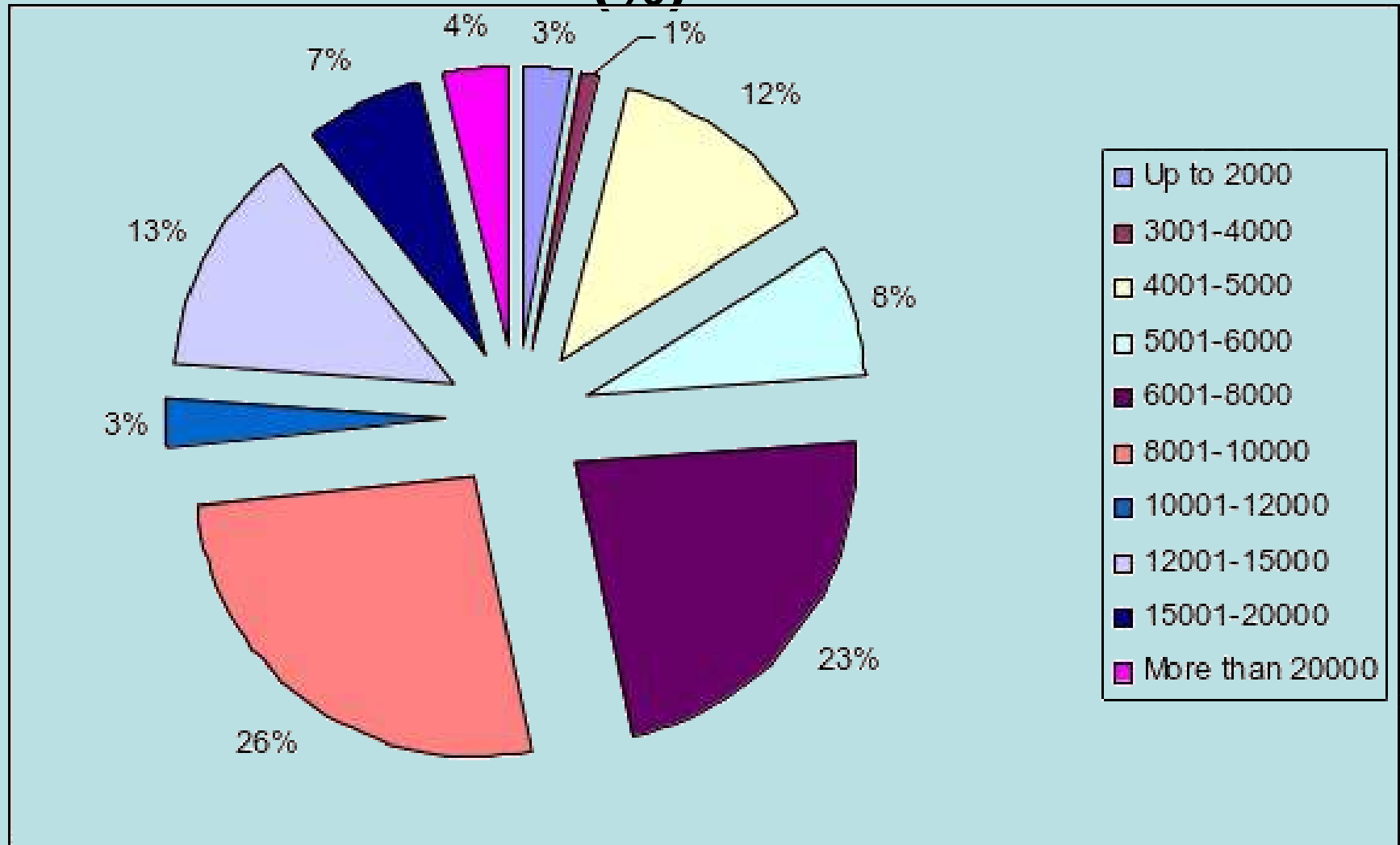
Male Female

Av ©-mvgvwRK Ae 'v †ckv (%)

Occupation	Percentage Distribution
Govt. Job	7.96
Teacher/Doctor/Engineer/Lawyear/Agriculturist	3.32
Farmer	1.11
Housewife	9.40
Business	14.16
Small trader/Hawker	23.78
Private Job/NGO	11.17
Handicraft/Cottege Industry/Weaver/Londry	0.22
Skilled Labour	2.65
Day Labour/Unskilled Labour	7.96
Rickshaw or Van Puller/Driver/Boatman	1.99
Beauty Parler/Barbar	0.11
Poultry/Shrime/Pisci culture	0.11
Ape Culture	0.22
Student	1.00
Unemployment	2.77
Retired person	8.19
Other	3.87
Total	100

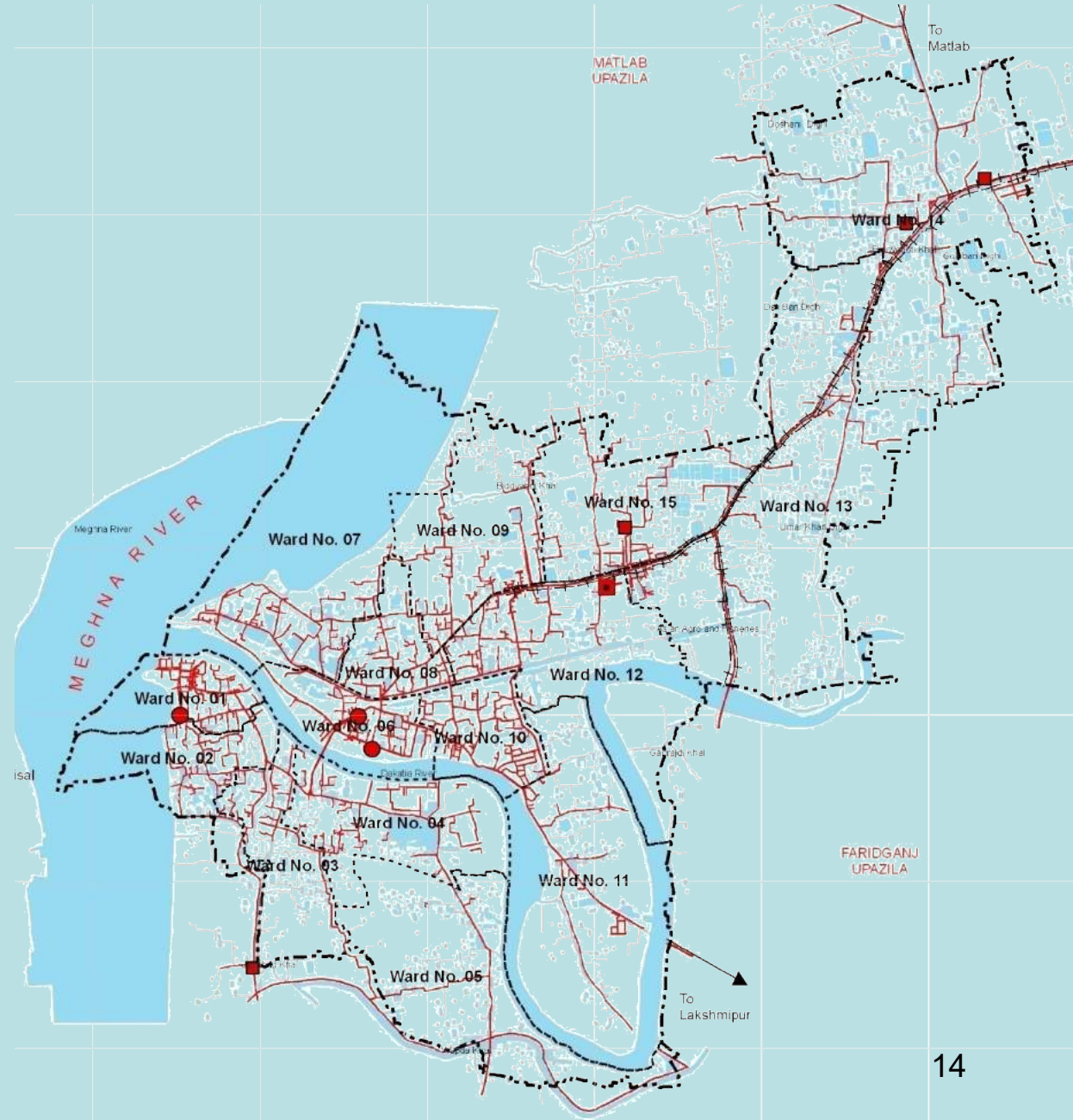
Av_©-mvgvwRK Ae'v

Avq
(%)



moK cÖKvi†f`

moK	%o`N©` (wk. wg.)	%
cvKv	118.7	61.21
Avav- cvKv	12.51	6.45
KvuPv	62.72	32.34
†gvU	193.93	100



Legend

- Administrative Boundary
- Pourashava Boundary
- Ward Boundary
- Structure Plan Boundary
- Administrative Location
- Upazila Headquarter
- Pourashava Office
- ~ Existing Road
- ~ Water Body
- ~ Important Road

moK thvMvthvM, cvwb wb® <vkb I cwiřekMZ

Ae⁻'v

moK thvMvthvM

Puv`cyi řcřimfvi hvwř;K hvbevnřbi AvwaK" řekx|

U^avwdK fwjDg mvřf©i gva"řg cÖvß wKQz Z_ "t

- hvwř;K hvbevnřb 60 %
(evm /U^avK /Kvi/gvBřµv evm/řgvUi mvBřKj /bwmgb)
- Ahvwř;K hvbevnřb 40% (f"vb /evB mvBřKj/wi·v)

.iyZ;cyY© welqmg~n

□ cÖavb moKmg~n LyeB AcÖk⁻'

□ moKmg~řni řKvb
řk^aYxweb[~] vm řbB

□ cÖavb moKmg~řni gřa" h_vh_
mřthvM řbB

□ řKvb mořKB dzUcvZ myweav
řbB řekMZ Ae⁻'v

□ řKvb Wvřweb I Wvwřús mvBU řbB

□ AK...wř wřřři Abycw⁻'wZ I MÖvgxY cwiřeřki KviřY
~řřYi gřiv Kg nřqvř cwiřekMZ Ae⁻'v

Zzjbvg~řK fvřřv