

**Rix†c**  
**msM,,nxZ Z\_É**

Av\_©-

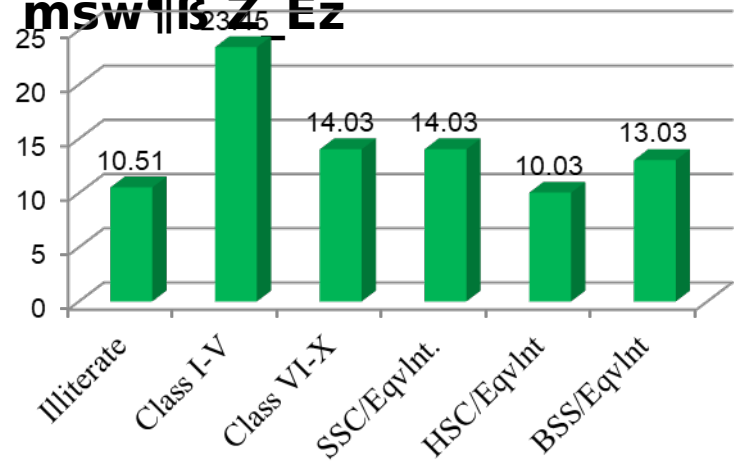
mvgvwRK

Ae'v RbmsL  
Év

lqvW © bs	cyi“l	gwnjv	‡gvU
1	5082	4836	9919
2	5310	5130	10440
3	4960	4914	9874
4	4795	4517	9313
5	5539	5035	10548
6	5484	4982	10467
7	4581	3990	8571
8	5008	4625	9633
9	4992	4552	9545
<b>‡gvU</b>	<b>45751</b>	<b>42581</b>	<b>88310</b>

(BBS 2001 gvaÉ‡g 2010 Gi  
RbmsLÉv)

□□□□□ ‡cŠimfvi Av\_©-  
mvgvwRK Ae'v Rvbvi RbÉ  
‡gvU Lvbvi 5% -i-wfwĒK  
^`ePqb bgybv msMÖn  
cÜwZ‡Z mgx¶v Pvjv‡bv nq|  
Av\_©-mvgvwRK Rixc ‡‡K  
cvlqv □□□□□ ‡cŠimfvi wk¶v,  
‡ckv I Avq mæúwK©Z  
msw¶B-Z Éz



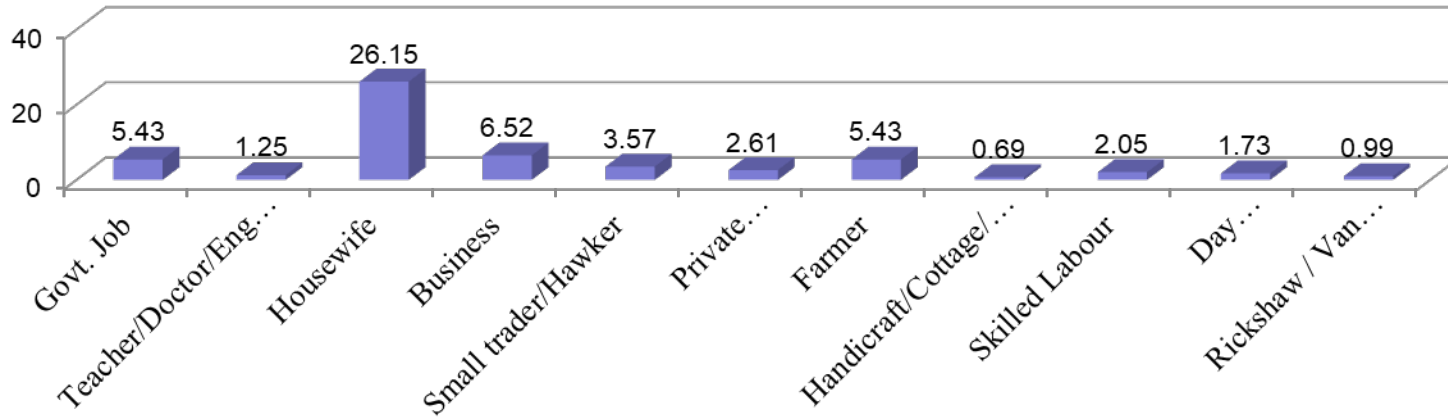
(□□□□ □□□□□□ □□□□, □□□□)

Av\_©-

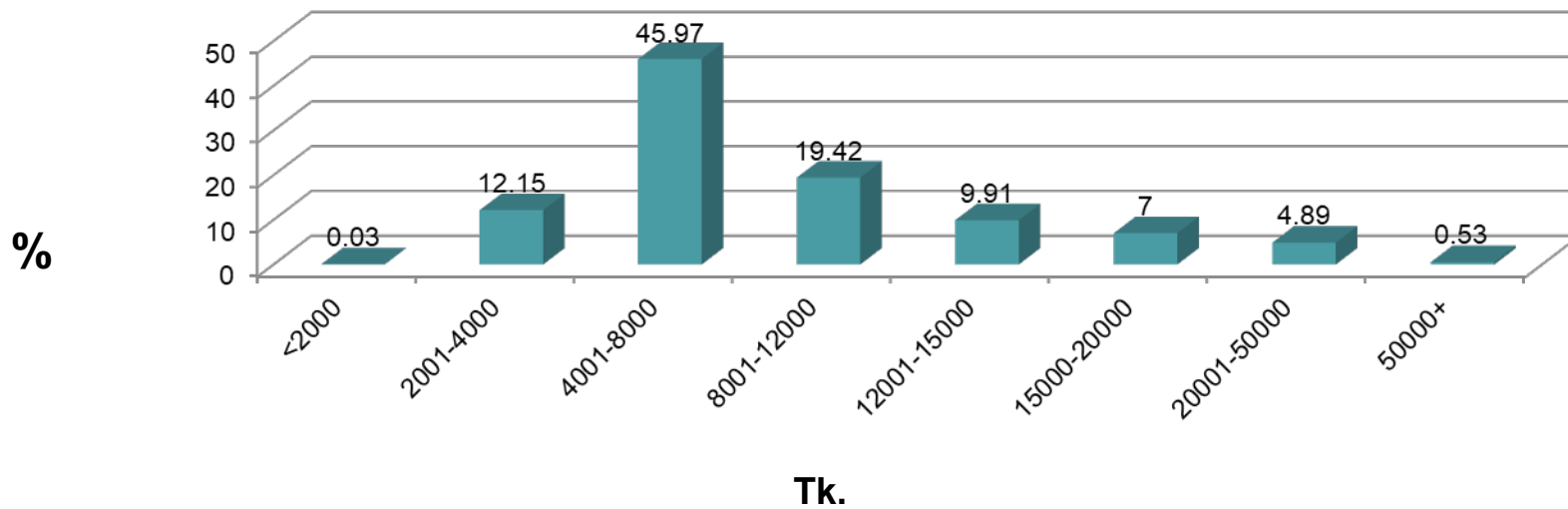
mvgvwRK

Ae''v

tckv (□□□□ □□□□□□□□  
□□□□, □□□□)



Avq (□□□□ □□□□□□□□ □□□□,  
□□□□)



# bv†Uvi †cŠimfvi

## f~wg eÜziZv

Mo D" PZv: 13.46 wg.

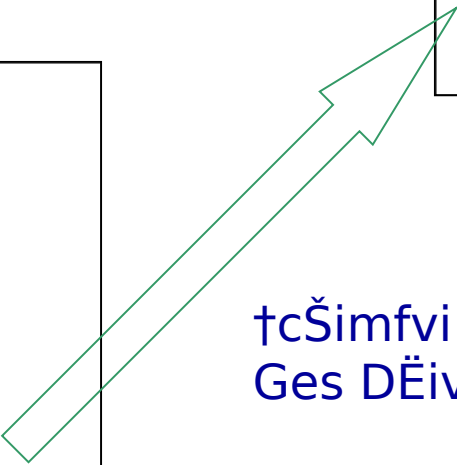
me©wbgœ D" PZv: - □.□□ wg.

Ae<sup>-</sup>'vb lqvW© 02

m†e©v" P D" PZv: □□.□□ wg. Ae<sup>-</sup>'vb

lqvW© 09 (□□□ □□□□)

f~wg  
eÜziZv



f~wg eÜziZvi  
AvswkK wPÎ

†cŠimfvi `w†bv†ki Xvj bv†iv` b`xi w`†K  
Ges DËivs†ki Xvj K†j†Ri w`†Kz

bv†Uvi  
ivRevwo

Qvqvvev  
Yx †gvo

gv`avm  
v †gvo

**Legend**

- Pourashava Boundary
- + Railway
- Road
- River & Khal

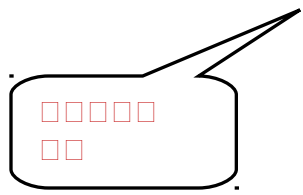
*Natore Bogra Road*

*Natore Rajshahi Bypass*

To Bogra

To Dhaka

To Rajshahi



# moK

## m<sub>x</sub>úwK©Z

moKki

moKvi

	‰ N©Ñ É (wK. wg.)	%
cvK v	101.28	59.0 6
Avav- cvKv	28.68	16.7 2
Kv uPv	41.53	24.2 2
lgv U	171.49	100

bv†Uvi †cŠimvi  
cÖavb moKmg~n

μ.	moKki bvg/Ae <sup>-</sup> 'vb	‰ NÉ (wK. wg.)
01	XvKv - bv†Uvi moK	2.867
02	bv†Uvi - e, ov moK	2.405
03	nmwcUvj moK	0.527
04	bjWv <sup>1/2</sup> v moK	0.642
05	†Zevwiqv- station (moK )	0.838
06	bv†Uvi - ivRkvnX	3.934

# moK †hvMv†hvM, cvwb

## wb® <vkb I cwi†ekMZ Ae´v moK

### †hvMv†hvM

bv†Uvi †cSimfvi hvwš;K hvbevn†bi AvwaKÉ tekx|  
XyKv - bv†Uvi mo†K U<sup>a</sup>vwdK fwjDg mv†f©i (mvj 2009) gvaÉ†g  
cÖvß wKQz Z\_Ét

- hvwš;K hvbevn 55%  
(evm 12%, U<sup>a</sup>vK 13%, Kvi/gvB†µv evm 6%, †gvUi mvB†Kj 14%,  
bwmgb 10%)
- Ahvwš;K hvbevn 45% (evB mvB†Kj 15%, wi·v, fÉvb 30%)  
(mvj 2009)

### cwi†ekMZ

#### Ae´v

- †Kvb WvwxcS mvBU †bB|
- wb®Kvkb †bUlqvK© fvj bq|
- wktii Dcw´wZ I wewfboe wkí KviLvbv te†o hvlqvi Kvi†Y `~I†Yi  
gvlv evo†Q, cwi†ekMZ  
Ae´v w`b w`b Lvivc n†"Q|

b`x, Lvj I cvwb

wb̄ <vkb eÉē'v

cvwb wb® <v

eÉē'v

□ bvi` b`

□ 3wU cÖvK...  
^^ NE© 2.5 wK.v

□ Lvj wji cvo  
D†jOL†hvME

†Kvb eÉē'v

□ cvKv †Wª†bi  
wK.wg. (□□□ □)

bv†Uvi

ivRevwo

Qvqvev  
Yx †gvo

- Legend**
- Pourashava Boundary
  - + + Railway
  - River & Khal
  - Katcha Drain
  - Pucca Drain

College Jola

Natore Nad

□□□□□  
□□